

## Allegato tecnico fornitura schede potenza

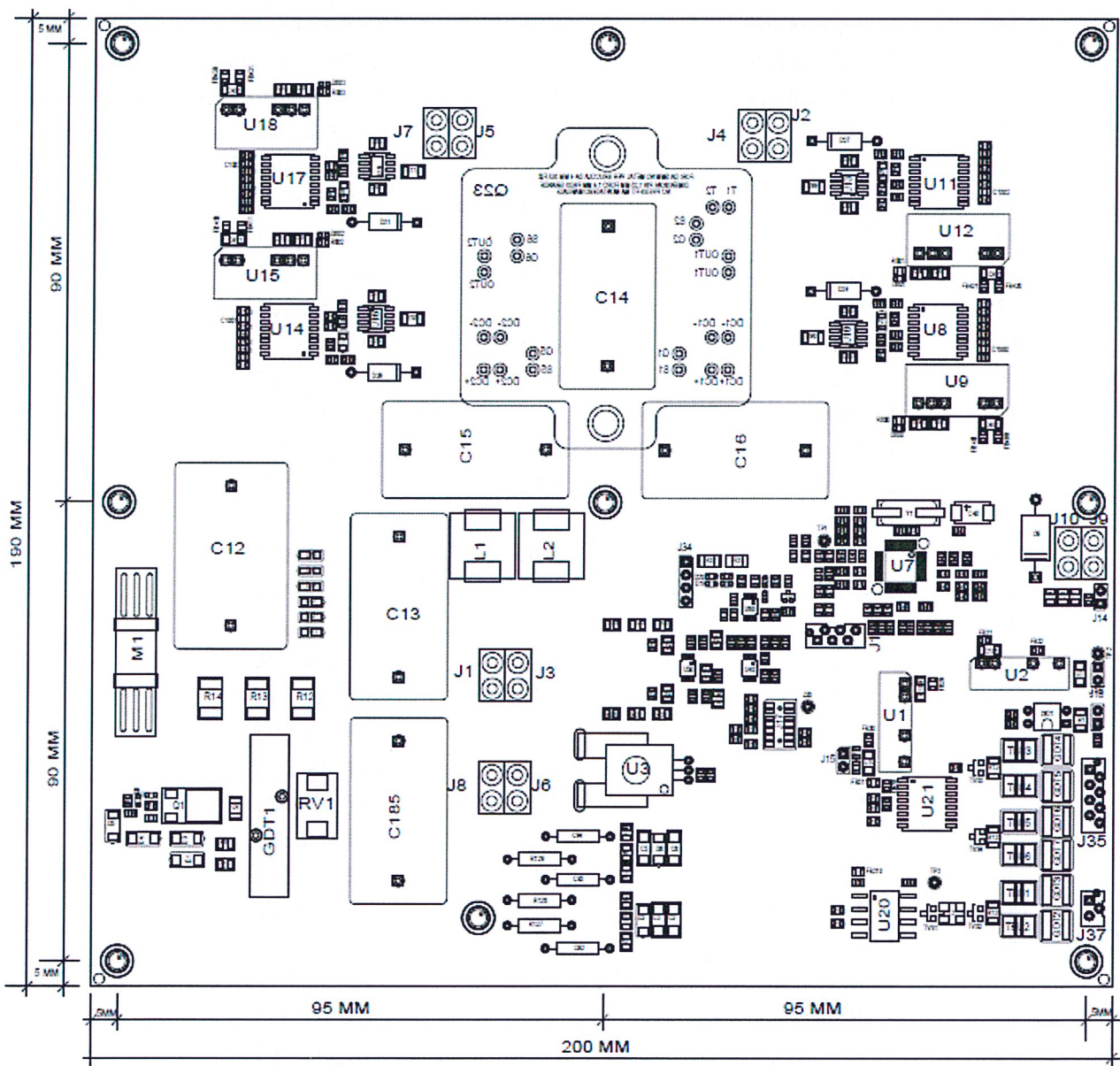
Le schede dovranno soddisfare le seguenti indicazioni:

- 4 strati
- Spessore rame 35um
- con serigrafia.
- Materiale FR4

Le dimensioni della scheda sono 200x190mm.

Lo schema di montaggio ha prevalentemente componenti sul lato TOP secondo la figura riportata

Lo schema di montaggio verrà fornito nel formato secondo accordi con il costruttore.



Le schede dovranno essere montate secondo la BOM (bill of material) indicata nel seguito

Item Number	Quantity	Value	Part Reference	PCB Footprint
1	1	100n	C1	SM_0603V3
2	1	68n/1808/1kV	C2	SM/C_1806_EC
3	1	68n/1808/1kV	C3	SM/C_1806_EC
4	1	270p/1206/1kV	C4	SM/R_1206_EC
5	1	68n/1808/1kV	C5	SM/C_1806_EC
6	1	68n/1808/1kV	C6	SM/C_1806_EC
7	1	68u/25V/T	C7	SM/0805V3
8	1	68u/25V/T	C8	SM/0805V3
9	1	68u/25V/T	C9	SM/0805V3
10	1	4.7u/16V/T	C10	SM/CT_3216_12_EC
11	1	4.7u/16V/T	C11	SM/CT_3216_12_EC
12	1	47u_63V_F	C12	CAP/FILM/PASSO27.5MMLARGHEZZA22XALTE
13	1	5u/1100V/F	C13	CAP_FILM_27_5MM19_0X30_0X31-5_EC
14	1	5u/1100V/F	C14	CAP/FILM/PASSO27.5MMLARGHEZZA19.0XAL
15	1	5u/1100V/F	C15	CAP/FILM/PASSO27.5MMLARGHEZZA19.0XAL
16	1	5u/1100V/F	C16	CAP/FILM/PASSO27.5MMLARGHEZZA19.0XAL
17	1	1u	C17	SM_0603V3
18	1	1u	C18	SM_0603V3
19	1	4.7n	C19	SM_0603V3
20	1	1u	C21	SM_0603V3
21	1	1u	C22	SM_0603V3
22	1	33p	C23	SM_0805V3
23	1	33p	C24	SM_0805V3
24	1	100p	C25	SM_0603V3
25	1	100p	C26	SM_0603V3
26	1	1u	C27	SM_0603V3
27	1	4.7n	C28	SM_0603V3
28	1	4.7n	C29	SM_0603V3
29	1	1u	C30	SM_0603V3
30	1	22p	C31	SM_0603V3
31	1	22p	C32	SM_0603V3
32	1	100p	C33	SM_0603V3
33	1	NM	C34	SM_0603V3
34	1	1n	C35	SM_0603V3
35	1	1n	C36	SM_0603V3
36	1	4.7u/25V	C37	SM_0603V3
37	1	4.7n	C38	SM_0603V3
38	1	4.7n	C39	SM_0603V3
39	1	4.7u/25V	C40	SM_0603V3
40	1	4.7u/25V	C41	SM_0603V3
41	1	100n	C42	SM_0603V3
42	1	100n	C43	SM_0603V3
43	1	100n	C44	SM_0603V3
44	1	100n	C45	SM_0603V3
45	1	100n	C46	SM_0603V3
46	1	100n	C47	SM_0603V3

47	1	68u/25V/T	C48	SM_CT_7343_12_EC
48	1	220PF	C49	SM_0603V3
49	1	220PF	C50	SM_0603V3
50	1	100n	C51	SM_0603V3
51	1	1uF	C52	SM_0603V3
52	1	1uF	C53	SM_0603V3
53	1	220PF	C54	SM_0603V3
54	1	10u	C55	SM_0805V3
55	1	10u	C56	SM_0805V3
56	1	10u	C57	SM_0805V3
57	1	10u	C58	SM_0805V3
58	1	220PF	C59	SM_0603V3
59	1	220PF	C60	SM_0603V3
60	1	100n	C61	SM_0603V3
61	1	1u	C62	SM_0603V3
62	1	1u	C63	SM_0603V3
63	1	220PF	C64	SM_0603V3
64	1	10u	C65	SM/0805V3
65	1	10u	C66	SM/0805V3
66	1	10u	C67	SM_0805V3
67	1	10u	C68	SM_0805V3
68	1	220PF	C69	SM_0603V3
69	1	220PF	C70	SM_0603V3
70	1	100n	C71	SM_0603V3
71	1	1uF	C72	SM_0603V3
72	1	1uF	C73	SM_0603V3
73	1	220PF	C74	SM_0603V3
74	1	10u	C75	SM_0805V3
75	1	10u	C76	SM_0805V3
76	1	10u	C77	SM_0805V3
77	1	10u	C78	SM_0805V3
78	1	220PF	C79	SM_0603V3
79	1	220PF	C80	SM_0603V3
80	1	100n	C81	SM_0603V3
81	1	1uF	C82	SM_0603V3
82	1	1uF	C83	SM_0603V3
83	1	220PF	C84	SM_0603V3
84	1	10u	C85	SM_0805V3
85	1	10u	C86	SM_0805V3
86	1	10u	C87	SM_0805V3
87	1	10u	C88	SM_0805V3
88	1	100n	C89	SM/0603V3
89	1	100n	C90	SM/0603V3
90	1	100n	C91	SM/0603V3
91	1	5u/1100V/F	C92	TH_500mils
92	1	5u/1100V/F	C93	TH_500mils
93	1	5u/1100V/F	C94	TH_500mils



94	1	4.7u/50V/T	C100	SM/CT_3216_12_EC
95	1	4.7u/50V/T	C101	SM/CT_3216_12_EC
96	1	5u/1100V/F	C185	CAP/FILM/PASSO27.5MMLARGHEZZA19.OXAL
97	1	4.7u/50V/T	C401	SM/CT_3216_12_EC
98	1	4.7u/50V/T	C411	SM/CT_3216_12_EC
99	1	4.7u/50V/T	C421	SM/CT_3216_12_EC
100	1	4.7u/50V/T	C431	SM/CT_3216_12_EC
101	1	100n	C920	SM/0603V3
102	1	NM	C1000	SM_0603V3
103	1	NM	C1001	SM_0603V3
104	1	NM	C1002	SM_0603V3
105	1	NM	C1003	SM_0603V3
106	1	BZG03C200TR	D1	SM_D_SMAE_12_EC
107	1	BYG10M-E3	D2	SM_D_SMAE_12_EC
108	1	BZG03C200TR	D3	SM_D_SMAE_12_EC
109	1	BZG03C200TR	D4	SM_D_SMAE_12_EC
110	1	BZG03C200TR	D5	SM_D_SMAE_12_EC
111	1	BYG10M-E3	D6	SM_D_SMAE_12_EC
112	1	NSR0240V2T1G	D7	SM_SOD523_12
113	1	BZT585B10T	D8	SM_SOD523_12
114	1	DIODE TVS	D9	TH_DO_15
115	1	LED	D10	SM_D_0603_21_EC
116	1	PD3S160	D11	SM_D_MICRO_SMA-21_EC
117	1	PD3S160	D12	SM_D_MICRO_SMA-21_EC
118	1	PD3S160	D13	SM_D_MICRO_SMA-21_EC
119	1	PD3S160	D14	SM_D_MICRO_SMA-21_EC
120	1	PD3S160	D15	SM_D_MICRO_SMA-21_EC
121	1	PD3S160	D16	SM_D_MICRO_SMA-21_EC
122	1	PMEG3010EB	D17	SM_SOD523_12
123	1	PMEG3010EB	D18	SM-SOD523_12
124	1	PMEG3010EB	D19	SM_SOD523_12
125	1	PMEG3010EB	D20	SM_SOD523_12
126	1	NSR0240V2T1G	D21	SM_SOD523_12
127	1	NSR0240V2T1G	D22	SM_SOD523_12
128	1	LED	D23	SM_D_0603_21_EC
129	1	UF4007 1kV	D24	SM_D_SMAE_12_EC
130	1	BAT165	D25	SM_SOD523_12
131	1	BAT165	D26	SM_SOD523_12
132	1	UF4007 1kV	D27	SM_D_SMAE_12_EC
133	1	BAT165	D28	SM_SOD523_12
134	1	UF4007 1kV	D29	SM_D_SMAE_12_EC
135	1	BAT165	D30	SM_SOD523_12
136	1	UF4007 1kV	D31	SM_D_SMAE_12_EC
137	1	BZT585B10T	D800	SM_SOD523_12
138	1	BZT585B10T	D801	SM_SOD523_12
139	1	BZT585B10T	D802	SM_SOD523_12
140	1	BZT585B10T	D803	SM_SOD523_12

FUUSE 24V 2.5A SF-				
141	1	0603F250	F1	SM_0603V3
142	1	FID_1MM	F2	SM_FIDUCIAL_1MM_EC
143	1	FID_1MM	F3	SM_FIDUCIAL_1MM_EC
144	1	FID_1MM	F4	SM_FIDUCIAL_1MM_EC
145	1	FID_1MM	F5	SM_FIDUCIAL_1MM_EC
146	1	FID_1MM	F6	SM_FIDUCIAL_1MM_EC
147	1	FID_1MM	F7	SM_FIDUCIAL_1MM_EC
148	1	MPZ1608B471A	FB1	SM_0603V3
149	1	MPZ1608B471A	FB2	SM_0603V3
150	1	MPZ1608B471A	FB3	SM_0603V3
151	1	MPZ1608B471A	FB4	SM_0603V3
152	1	MPZ1608B471A	FB5	SM_0603V3
153	1	MPZ1608B471A	FB20	SM_0603V3
154	1	MPZ1608B471A	FB30	SM_0603V3
155	1	MPZ1608B471A	FB31	SM_0603V3
156	1	MPZ1608B471A	FB32	SM_0603V3
157	1	MPZ1608B471A	FB310	SM_0603V3
158	1	MPZ1608B471A	FB311	SM_0603V3
159	1	MPZ1608B471A	FB400	SM_0603V3
160	1	MPZ1608B471A	FB401	SM_0603V3
161	1	MPZ1608B471A	FB410	SM_0603V3
162	1	MPZ1608B471A	FB411	SM_0603V3
163	1	MPZ1608B471A	FB420	SM_0603V3
164	1	MPZ1608B471A	FB421	SM_0603V3
165	1	MPZ1608B471A	FB430	SM_0603V3
166	1	MPZ1608B471A	FB431	SM_0603V3
167	1	SG420	GDT1	SM_GAS_SG420_EC
168	1	2031-23T	GDT2	SM_GAS_2031-23T_EC
169	1	2031-23T	GDT3	SM_GAS_2031-23T_EC
170	1	2031-23T	GDT4	SM_GAS_2031-23T_EC
171	1	2031-23T	GDT5	SM_GAS_2031-23T_EC
172	1	2031-23T	GDT6	SM_GAS_2031-23T_EC
173	1	2031-23T	GDT7	SM_GAS_2031-23T_EC
174	1	TPL521-1	ISO1	TLP521-1
175	1	CONN PWR 2-J	J1	PASSO 200 MILS,FORO 2,0 MM PADS 4,0 MM
176	1	CONN PWR 2-J	J2	PASSO 200 MILS,FORO 2,0 MM PADS 4,0 MM
177	1	CONN PWR 2-J	J3	PASSO 200 MILS,FORO 2,0 MM PADS 4,0 MM
178	1	CONN PWR 2-J	J4	PASSO 200 MILS,FORO 2,0 MM PADS 4,0 MM
179	1	CONN PWR 2-J	J5	PASSO 200 MILS,FORO 2,0 MM PADS 4,0 MM
180	1	CONN PWR 2-J	J6	PASSO 200 MILS,FORO 2,0 MM PADS 4,0 MM
181	1	CONN PWR 2-J	J7	BLKCON_2-7_5MMPASSO 200 MILS,FORO 2,0
182	1	CONN PWR 2-J	J8	PASSO 200 MILS,FORO 2,0 MM PADS 4,0 MM
183	1	CONN PWR 2-J	J9	PASSO 200 MILS,FORO 2,0 MM PADS 4,0 MM
184	1	CONN PWR 2-J	J10	PASSO 200 MILS,FORO 2,0 MM PADS 4,0 MM
185	1	VCC24	J14	HEADER 2 PIN PASSO 2,54 MM
186	1	VCC3.3	J15	HEADER 2 PIN PASSO 2,54 MM

187	1	VCC5	J16	HEADER 2 PIN PASSO 2,54 MM
188	1	JTAG_2x7	J17	AMPHENOL-FCI CON_20021321-00010C4LF
189	1	STOP	J18	HEADER 2 PIN PASSO 2,54 MM
190	1	SPI	J19	CON6_AMP_MINI_CT 292207-6
191	1	GND	J20	TP FORO 1,0 MM HEADER-1
192	1	CST206-3A	J34	
193	1	RS-485	J35	CON8_AMP_MINI_CT 292207-8
194	1	CAN	J37	CON3_AMP_MINI_CT 292207-3
195	1	SRP1245A-1R8M	L1	SM_L_SRP12XX_EC
196	1	SRP1245A-1R8M	L2	SM_L_SRP12XX_EC
197	1	ACT45B-110-2P	L3	SM_L_1812_EC
198	1	5731-Aavid	M1	MEC_5731-HSINK-DPAK_EC
199	1	MOUNT HOLE 4MM pad	M10	MTHOLE4MM_PAD
200	1	MOUNT HOLE 4MM pad	M11	MTHOLE4MM_PAD
201	1	MOUNT HOLE 4MM pad	M12	MTHOLE4MM_PAD
202	1	MOUNT HOLE 4MM pad	M13	MTHOLE4MM_PAD
203	1	MOUNT HOLE 4MM pad	M14	MTHOLE4MM_PAD
204	1	MOUNT HOLE 4MM pad	M15	MTHOLE4MM_PAD
205	1	STD3NK100Z	Q1	SM_DPAK_EC
206	1	2N7002W	Q6	SM_SOT323_123_EC
207	1	VS-S1734	Q23	VS-S1734
208	1	10	R1	SM_R_1206_EC
209	1	1MEG/0805	R2	SM_0805V3
210	1	187k/0805	R3	SM_0805V3
211	1	1MEG/0805	R4	SM_0805V3
212	1	1MEG/0805	R5	SM_0805V3
213	1	187k/0805	R6	SM_0805V3
214	1	1MEG/0805	R7	SM_0805V3
215	1	1k	R8	SM_0603V3
216	1	1MEG/0805	R9	SM_0805V3
217	1	1MEG/0805	R10	SM_0805V3
218	1	1k	R11	SM_0603V3
219	1	100_2512_2W	R12	SM_R_2512_EC
220	1	100_2512_2W	R13	SM_R_2512_EC
221	1	100_2512_2W	R14	SM_R_2512_EC
222	1	20k	R15	SM_0603V3
223	1	20k	R16	SM_0603V3
224	1	6.8	R17	SM_0603V3
225	1	100	R18	SM_0603V3
226	1	2.2MEG/0805	R19	SM_0805V3
227	1	2.2MEG/0805	R20	SM_0805V3
228	1	2.2MEG/0805	R21	SM_0805V3
229	1	20k	R22	SM_0603V3
230	1	20k	R23	SM_0603V3
231	1	20k	R24	SM_0603V3
232	1	20k	R25	SM_0603V3
233	1	2.2MEG/0805	R26	SM_0805V3



234	1	2.2MEG/0805	R27	SM_0805V3
235	1	2.2MEG/0805	R28	SM_0805V3
236	1	20k	R29	SM_0603V3
237	1	20k	R30	SM_0603V3
238	1	3.6	R31	SM_R_1206_EC
239	1	3.6	R32	SM_R_1206_EC
240	1	20k	R33	SM_0603V3
241	1	20k	R34	SM_0603V3
242	1	4.7k	R35	SM_0603V3
243	1	10k	R36	SM_0603V3
244	1	0	R37	SM_0603V3
245	1	47k	R38	SM_0603V3
246	1	56	R39	SM_0603V3
247	1	56	R40	SM_0603V3
248	1	56	R41	SM_0603V3
249	1	56	R42	SM_0603V3
250	1	56	R43	SM_0603V3
251	1	56	R44	SM_0603V3
252	1	56	R45	SM_0603V3
253	1	56	R46	SM_0603V3
254	1	56	R47	SM_0603V3
255	1	56	R48	SM_0603V3
256	1	56	R49	SM_0603V3
257	1	56	R50	SM_0603V3
258	1	56	R51	SM_0603V3
259	1	56	R52	SM_0603V3
260	1	56	R53	SM_0603V3
261	1	56	R54	SM_0603V3
262	1	2.2k	R55	SM_0603V3
263	1	NM	R56	SM_0603V3
264	1	10k	R57	SM_0603V3
265	1	56	R58	SM_0603V3
266	1	56	R59	SM_0603V3
267	1	56	R60	SM_0603V3
268	1	56	R61	SM_0603V3
269	1	56	R62	SM_0603V3
270	1	56	R63	SM_0603V3
271	1	56	R64	SM_0603V3
272	1	56	R65	SM_0603V3
273	1	56	R66	SM_0603V3
274	1	56	R67	SM_0603V3
275	1	56	R68	SM_0603V3
276	1	56	R69	SM_0603V3
277	1	56	R70	SM_0603V3
278	1	1k	R71	SM_0603V3
279	1	1k	R72	SM_0603V3
280	1	100	R73	SM_0603V3

281	1	470	R74	SM_0603V3
282	1	1k	R75	SM_0603V3
283	1	100	R76	SM_0603V3
284	1	470	R77	SM_0603V3
285	1	100	R78	SM_0603V3
286	1	390	R79	SM_0603V3
287	1	1k	R80	SM_0603V3
288	1	0	R81	SM_0603V3
289	1	0	R82	SM_0603V3
290	1	0	R83	S_0603V3
291	1	10 k	R84	SM_0603V3
292	1	10 k	R85	SM_0603V3
293	1	NM	R86	SM_0603V3
294	1	10	R87	SM_0603V3
295	1	10	R88	SM_0603V3
296	1	1k	R89	SM_0603V3
297	1	1	R90	SM/R_1206_EC
298	1	0	R91	SM_0603V3
299	1	0	R92	SM_0603V3
300	1	10 k	R93	SM_0603V3
301	1	10 k	R94	SM_0603V3
302	1	NM	R95	SM_0603V3
303	1	10	R96	SM_0603V3
304	1	10	R97	SM_0603V3
305	1	1k	R98	SM_0603V3
306	1	1	R99	SM/R_1206_EC
307	1	0	R100	SM_0603V3
308	1	0	R101	SM_0603V3
309	1	10 k	R102	SM_0603V3
310	1	10 k	R103	SM_0603V3
311	1	NM	R104	SM_0603V3
312	1	10	R105	SM_0603V3
313	1	10	R106	SM_0603V3
314	1	1k	R107	SM_0603V3
315	1	1	R108	SM/R_1206_EC
316	1	0	R109	SM_0603V3
317	1	0	R110	SM_0603V3
318	1	10 k	R111	SM_0603V3
319	1	10 k	R112	SM_0603V3
320	1	NM	R113	SM_0603V3
321	1	10	R114	SM_0603V3
322	1	10	R115	SM_0603V3
323	1	1k	R116	SM_0603V3
324	1	1	R117	SM/R_1206_EC
325	1	56	R118	SM/0603V3
326	1	56	R119	SM/0603V3
327	1	NM	R120	SM/0603V3



328	1 4.7k	R121	SM/0603V3
329	1 4.7k	R122	SM/0603V3
330	1 56	R123	SM/0603V3
331	1 NM/124/1206	R124	SM/R_1206_EC
332	1 NM/124/1206	R125	SM/R_1206_EC
333	1 NM/124/1206	R126	SM/R_1206_EC
334	1 1MEG/0805	R127	TH_500mils
335	1 1MEG/0805	R128	TH_500mils
336	1 1MEG/0805	R129	TH_500mils
337	1 4.7k	R130	SM_0603V3
338	1 4.7k	R131	SM_0603V3
339	1 4.7k	R132	SM_0603V3
340	1 4.7k	R134	SM_0603V3
341	1 2.7k	R135	SM_0603V3
342	1 1k	R136	SM_0603V3
343	1 18	R800	SM_0603V3
344	1 18	R801	SM_0603V3
345	1 18	R802	SM_0603V3
346	1 18	R803	SM_0603V3
347	1 CU4032K275G2	RV1	SM_V_4032_12_EC
348	1 TBU-CA065-200	TBU1	SM_TBU-CA0XX_TVS_EC
349	1 TBU-CA065-200	TBU2	SM_TBU-CA0XX_TVS_EC
350	1 TBU-CA065-200	TBU3	SM_TBU-CA0XX_TVS_EC
351	1 TBU-CA065-200	TBU4	SM_TBU-CA0XX_TVS_EC
352	1 TBU-CA065-200	TBU5	SM_TBU-CA0XX_TVS_EC
353	1 TBU-CA065-200	TBU6	SM_TBU-CA0XX_TVS_EC
354	1 TEST POINT	TP1	SM_TP_EC
355	1 VCC_COM	TP2	SM_TP_EC
356	1 GND_COM	TP3	SM_TP_EC
357	1 CDSOT23-SM712	TVS1	SM_SOT23_123_V2
358	1 CDSOT23-SM712	TVS2	SM_SOT23_123_V2
359	1 CDSOT23-SM712	TVS3	SM_SOT23_123_V2
360	1 CDSOT23-SM712	TVS4	SM_SOT23_123_V2
361	1 MEF1S2403SP3C	U1	MEF1S2403SP3C
362	1 MEF1S2405SP3C	U2	MEF1S2405SP3C
363	1 ACS758LCB-050U-PFF-T	U3	SENS_ACS770LCB-50U-PFF-T_EC
364	1 IXDN614 SI	U10	IXDN614CI_YI
365	1 ISO5852S	U11	ISO5852S
366	1 MGJ2D242005SC	U12	MGJ2D242005SC
367	1 IXDN614 SI	U13	IXDN614CI_YI
368	1 MGJ2D242005SC	U15	MGJ2D242005SC
369	1 IXDN614 SI	U16	IXDN614CI_YI
370	1 ISO5852S	U17	ISO5852S
371	1 MGJ2D242005SC	U18	MGJ2D242005SC
372	1 IXDN614 SI	U19	IXDN614CI_YI
373	1 ISO1050	U20	ISO1050
374	1 ISO3086	U21	ISO3086

375	1 FAN4274IMU8X	U40	SOG_65M_8_WG4_90_L3_00_EC
376	1 FAN4274IMU8X	U50	SOG_65M_8_WG4_90_L3_00_EC
377	1 FAN4274IMU8X	U60	SOG_65M_8_WG4_90_L3_00_EC
378	1 MC56F84550VLF	U7	QUAD_50M_48_WG9_00
379	1 ISO5852S	U8	ISO5852S
380	1 MGJ2D242005SC	U9	MGJ2D242005SC
381	1 ISO5852S	U14	ISO5852S
382	1 HCM498000000ABJT	Y1	SM_XT_HC-49_U-S_EC